

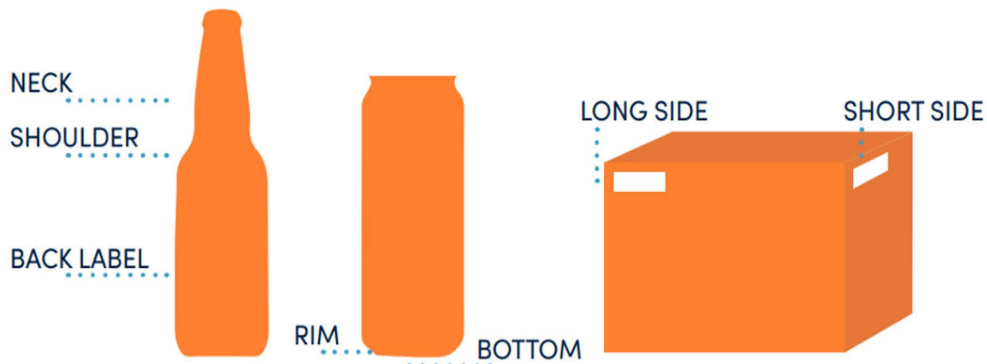
Storage Best Practices

Store all beer between 0° - 5°C (32° - 41°F)

Rotate product for Freshness

Always check freshness codes to ensure beverages are within recommended shelf life and that the oldest stock is rotated to the front of the shelves. Rotating products ensures that older stock is used first, maintaining freshness and taste.

Location of Product Codes / Code Formats



DOMESTIC MOLSON BRANDS | Molson Domestic

M	DD	Y	# #	HH:MM
Month of production	Day of month	Last digit of production year	Brewery & Line	Hour: Minute

MONTH CODE

A: JANUARY	E: MAY	J: SEPTEMBER
B: FEBRUARY	F: JUNE	K: OCTOBER
C: MARCH	G: JULY	L: NOVEMBER
D: APRIL	H: AUGUST	M: DECEMBER

YEAR

4: 2024
5: 2025
6: 2026
Etc.

Example: K18422 Packaged October 18th, 2024

DOMESTIC KEGS/DRAUGHT

Brand	DD	MMM	YY	#	HH:MM
Brand	Day of packaging	Month of packaging	Year of packaging	Brewery	Hour: Minute



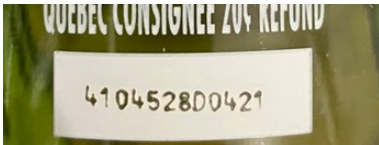
Example: COORS ORIG 03JUL25 4 0843
Coors Original, packaged July 3, 2025 08:43



Y	JJJ	XX
Last Digit of production year	Julian Calendar Day of production	Brewery & Line

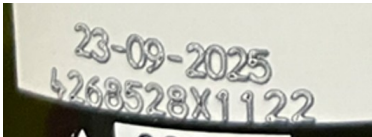


Example: 4247A F
Packaged in 2024, September 3rd (247th day of the year)



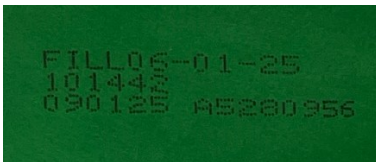
Y	JJJ	528	X	HH:MM
Last Digit of production Year	Julian Calendar Day of Year	Country Code	Brewery & Line	Hour: Minute

Example: 4104528D0421
Packaged in 2024, April 13 (104th day of the year)



Fill Date or Best Before Date format: **DD-MM-YY**

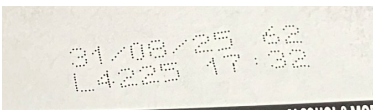
Example BBD: 23-09-2025
Best Before September 23, 2025, produced 268th day of 2024



Example: FILL06-01-25
Packaged the 6th of January 2025



DD	MM	YY	##	L	Y	JJJ	HH:MM
Best Before (BB) Day	BB Month	BB Year	Line	Lot	Year of packaging	Julian Date of packaging	Hour: Minute



Example: 31/08/25 62 L4225 17:32
Best Before Date: August 31, 2025
Product packed on 225th day of 2024 at 17:32



CREEMORE

M	DD	YY	HH:MM
Month of production	Day of month	Last 2 digits of production year	Hour: Minute

Example: A042209:07

Freshness code: Produced January 4th, 2022 at 9:07